

Access to Wajima

60min
from Haneda
to Noto
Satoyama
Airport

JR
From Tokyo to Kanazawa
By Hokuriku Shinkansen: 2hrs & 28min
From Osaka to Kanazawa
By express train: 2hrs & 40min
From Nagoya to Kanazawa
By express train: 3hrs
To go to Wajima from Kanazawa, take an express bus.

The Hokuriku Shinkansen Line opened on Mar. 14, 2015.



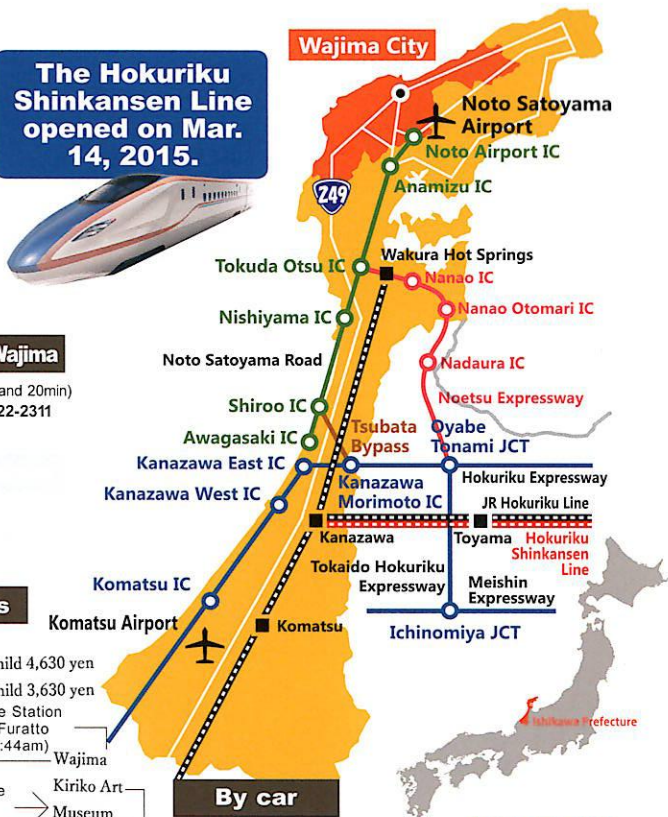
Express bus from Kanazawa to Wajima

11 services a day (Required time: 2hrs ~2 hrs and 20min)
Inquiries: Hokutetsu Okunoto Bus Tel:0768-22-2311

Regular Sightseeing Bus

Wajima-go (Reservation required)
Fare: From Kanazawa: Adult 7,500 yen, Child 4,630 yen
From Wajima: Adult 5,500 yen, Child 3,630 yen
Kanazawa Sta. Kenrokuen Exit (7:50am) → Roadside Station Wajima Furatto Homu (9:44am) → Wajima
Wajima Morning Market / Wajima Lacquerware Center → Senmaida (terraced rice paddies) → Kiriko Art Museum
Hotel View Sunset (lunch) → Hatago-iwa (rock formation seen from a bus window) → Chirihama Beach Driveway → Kanazawa Sta. Port Exit (4:30pm)
*Regular sightseeing buses run from Kanazawa Station, Wakura Onsen Station and Noto Airport
Hokutetsu Bus Reservation Center : 076-234-0123

*The above information is as of October 2019



Airplane

The departure/arrival schedule is subject to change. Check the time (schedule of Feb. 2015)

Haneda Airport (Tokyo)	Noto Satoyama Airport
8:55	9:55
14:50	15:50
One hour	

ANA ☎ 0570-029-222

From the airport to Wajima

Furusato Taxi

Furusato Taxi is convenient and reasonable for the trip from Noto Satoyama Airport to Wajima.
You can phone to order a share-ride taxi (max. 9 people). (Reservation required)

Please make your reservation by the morning of the day before you need the taxi. → You will receive a confirmation call by 6:00pm on the day before you need the taxi.

Share-ride taxi (bus)

Using a share-ride taxi (bus) between the airport and Wajima reduces waiting time and cost.

Inquiries: Minato Taxi Tel: 0768-22-2360 (To Wajima)
Schedule is subject to change. Please check the time.

By car



レンタサイクル Explore Wajima by bicycle

Bicycle rental system

Enjoy an eco-tour in Wajima riding a power-assisted bicycle!

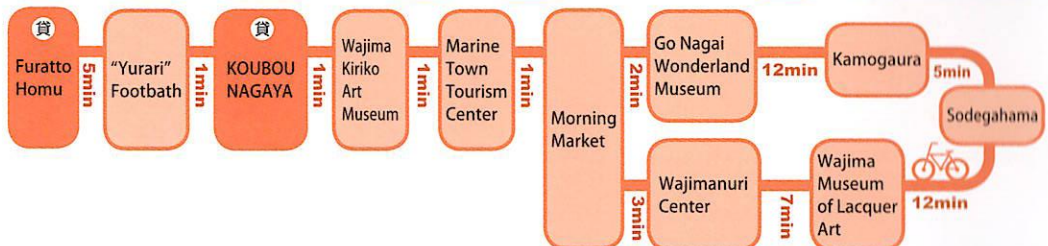
貨 mark shows a bicycle rental station.



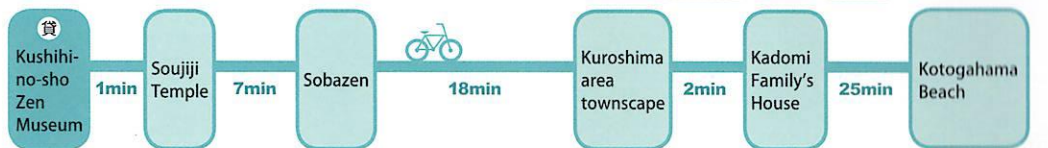
Sosogi Route
Time required : 54min
曾々木コース



Wajima Central Area Route
Minimum time required : 59min
輪島市街地コース



Monzen Route
Time required : 53min
門前コース



Wajima Tourist Information Center

Address: 20-1-131 Kawai-machi, Wajima, Ishikawa 928-0001 JAPAN

TEL: +81 768 22 1503 FAX: +81 768 23 0136

Open Hours: 8:30-16:00 Closed: Open Everyday

URL: <https://wajimanavi.jp/> Email: wajimaguide@gmail.com

Tourist Information



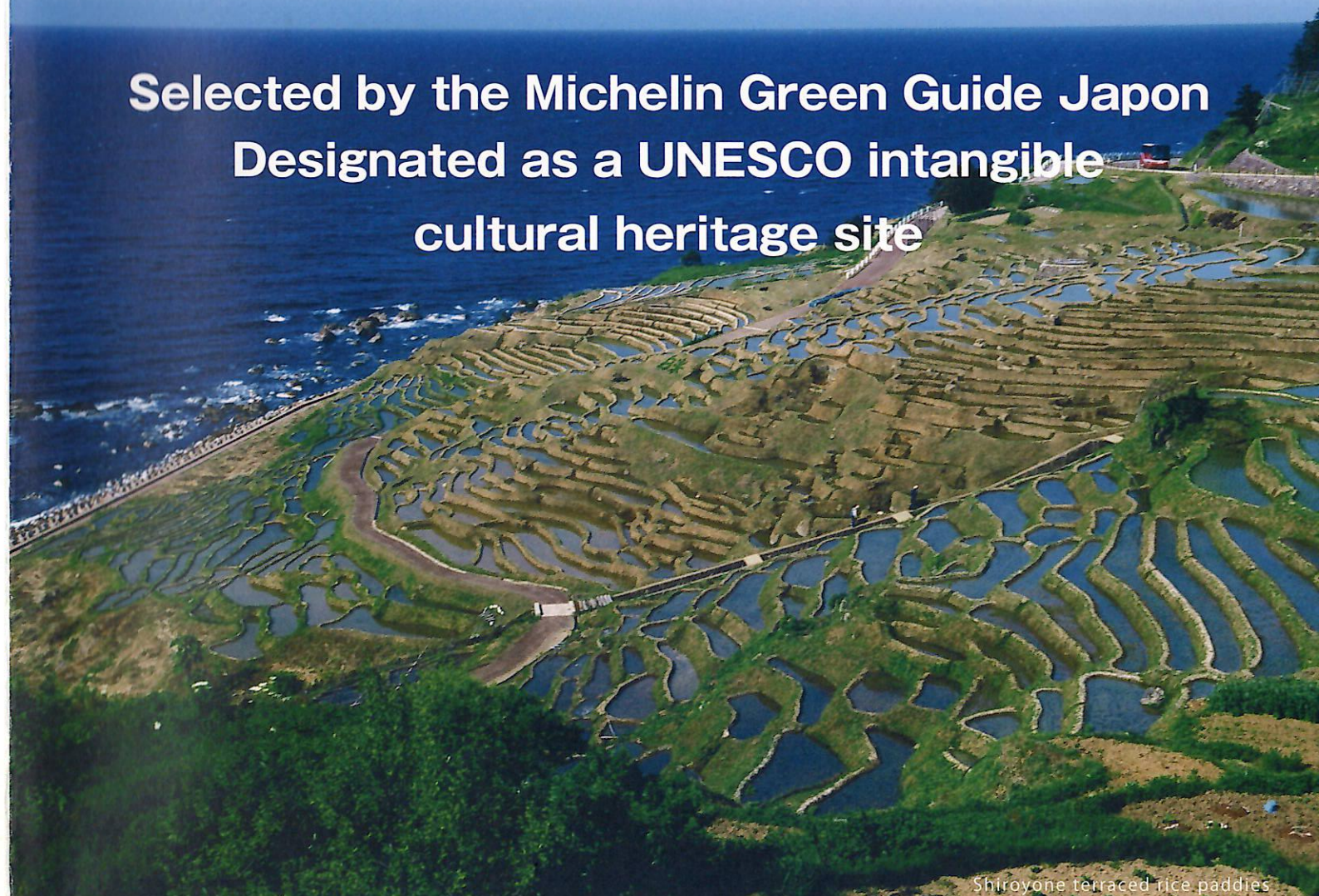
The first GIAHS site in Japan

輪島

WAJIMA



Selected by the Michelin Green Guide Japan
Designated as a UNESCO intangible
cultural heritage site



Shiroyone terraced rice paddies

Japanese traditional landscapes created by nature and people

Wild waves breaking against the rocky shoreline, a vermillion sun setting over the horizon, mountains and beaches tenderly enveloping people as they go about their daily lives — beautiful landscapes created by the Sea of Japan will unfold before your eyes. One of these is Senmaida (terraced rice paddies), a symbol of Noto selected as GIAHS, which, with its seasonal changes in color, resembles a beautiful work of art.

First in Japan

GIAHS

Come, see and feel it yourself.

Michelin Green Guide Japon



Senmaida terraced rice paddies

Nationally designated scenic beauty



Beautiful scenery created by the combination of sky, sea and terraced rice paddies **E-2**

More than a thousand small rice paddies extend down to the seashore. Their appearance changes with the seasons: filled with water in spring, green in summer, and golden in autumn. They are also beautiful in different ways depending on the time of day. Roadside Station Senmaida Pocket Park, which overlooks the paddies, is a good place to shop and have a rest. There is an ownership system for the paddies, which enables you to grow rice for yourself.

☎ 0768-23-1146

(Wajima City Tourism Division)

Senmaida Light Up **E-2**

The annual senmaida Light Up (Aze no Kirameki) is one of the best and most famous illumination events in Wajima City. The rice paddies twinkle in the darkness with 25,000 solar LEDs every night from mid-October to mid-March. The LED lights, each placed by hand by local volunteers, change color every 15 minutes. With the rice fields changing the color from pink, green, gold, and blue against the backdrop of the ocean, they are truly something to behold.



あぜのきらめき

WAJIMANURI - lacquerware of supreme quality for use in your daily life

How beautiful the real thing is!

Wajimanuri is a typical traditional Japanese handcraft, the production of which involves more than 120 processes from wood carving to top coating. It is beautiful and durable; it can be used your whole life if handled with care. Why not acquire a real Wajimanuri piece, and use it carefully for a long time? Lacquerware can retain heat, and feels soft to your lips; it is ideal for drinking tea or coffee in your everyday life.

Look for this sign.



Wajimanuri studio tour

You can recognize a Wajimanuri studio or shop by the signboard in front of the building. You are welcome to visit and talk with a craftsman.



輪島塗

Nushiya	Wankiji (Woodturning)	Hookiji (Carving)	Sashimonokiji (Assembling)	Magemono (Bending)	
Shitaji (Undercoating)	Togimono (Mid-polishing)	Uwanuri (Top coating)	Makie (Makie decoration)	Chinkin (Inlay decoration)	Roiro (Final polishing)



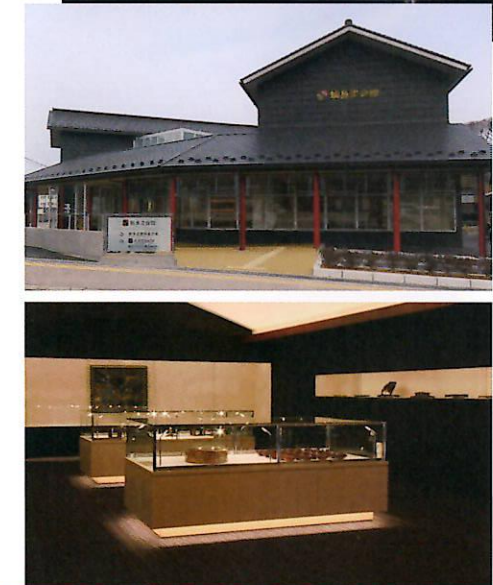
工芸

輪島塗会館 Wajima Urushi Craft Museum

See and buy lacquerware. **D-2**

On the first floor, about 60 shops in Wajima City sell their lacquerware. The hall is run by the Lacquerware Association, so the works sold here are high quality and reasonably priced. Lacquerware can be repaired here as well. You can use Wajimanuri your whole life, since it is durable and can be repaired. On the second floor, there is a museum that exhibits around 3,000 articles related to the history of Wajimanuri.

☎ 0768-22-2155 Closed: No closing day Open: 8:30AM~5:00PM Admission: 300 yen (Only for the exhibition room on the 2nd floor)



白米千枚田

Welcome, active and energetic explorers — Noto is yours to enjoy!

Go Nagai Wonderland Museum Meeting unique cartoon characters

Go Nagai is a famous cartoonist from Wajima. His works have been highly evaluated overseas as well. This museum was constructed in 2009 for the purpose of appreciating his works. It is located closed to Asachi Street. The appearance of the building is Japanese-style, but when

you step inside, the distinctive world of Nagai appears. The exhibits include the 2m-high Majinger Z and valuable original drawings. ☎ 0768-23-0715 No closing days (closed for exhibition changes) Open: 8:30AM~5:00PM (Entry by 4:30PM) Admission: **520 yen**

You can see Majinger Z on a 1/9 scale.

©Go Nagai / Dynamic Production 2020
©Go Nagai / Dynamic Planning 2020



Look at all the local specialties! And they're really reasonable.

Parking available

Wajima Morning Market



A morning market with a history of over 1,000 years

Various local products are sold at the morning market – vegetables, fish and other seafood and seaweed. Enjoy talking and bargaining with local women at the market.

☎ 0768-22-7653

(Wajima Morning Market Urushi)

Open : Morning only

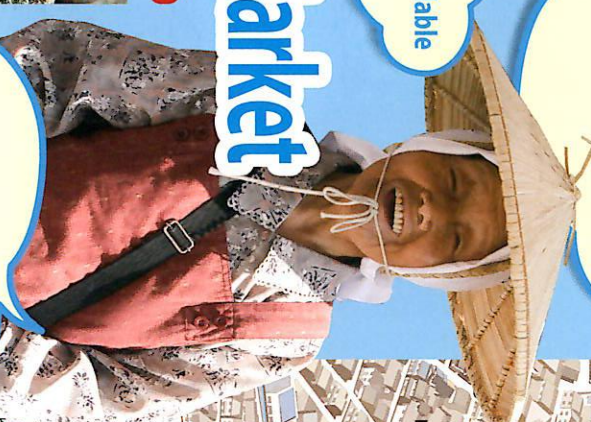
Opened : Jan 1st~3rd

2nd and 4th Wednesday

(occasional special opening days)



It's fun just to talk with us, but please buy something if you can.



Map of the Wajima City Central Area



Noto Bowl



What is a Noto bowl?

- Local high-quality koshikikari rice and water are used.
- All ingredients such as fish, meat, vegetables and traditional preserved food are locally produced.
- The ceramic bowls and chopsticks used are produced in Noto.

Special deluxe rice bowl topped with sashimi

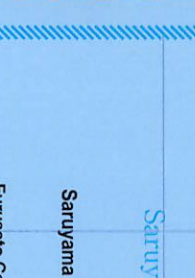
This typical local dish consists of rice topped with fine local specialties, served in locally made ceramic bowls. Seventeen restaurants in Wajima City serve their original healthy Noto bowls.

☎ 0768-52-0516 (Noto Bowl Association)

Fresh Seafood

Various types of fish and seafood are caught off the coast of Wajima; here you can enjoy fresh seafood all year round. Crab, shrimp as well as abalone and turban shells caught by female divers without diving gear are particularly recommended.

☎ 0768-22-1485 (Ishikawa Fishermen's Association Wajima Branch)



Wajima Hot Spring Resort

Watching the sun setting into the Sea of Japan while relaxing in a hot spring tub will warm both your body and your heart. Contentment awaits you in Wajima!

“Yurari” Footbath

A relaxing time for both people and pets

The footbath located near the craftsman studios and morning market is an ideal spot to drop by during a walk. Your pets can also take a footbath for pets.

☎ 0768-23-1146 (Wajima City Tourism Division)



Gojino Taiko

Ceramic Wall Painting of Gojino Taiko Drumming at Nafune Por

御陣乗太鼓

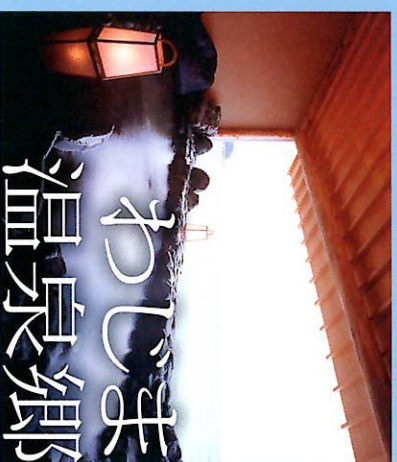
The painting is located at Nature Port, which is the birthplace of Gojino Taiko Drumming. The Gojino Taiko is part of Ishikawa Prefecture's intangible cultural heritage. The wall is made of Kutani style porcelain and painted with Wajima lacquer. Visitors can see both the local traditional culture and craft at the same time.

Hegura-jima Island



Angling **C-1**
Hegura-jima Island is a small island located 50km north of Wajima Port. It is one and a half hours away by ferry, and there is one sailing a day. The island has many coves and cliffs, making it an ideal site for angling. In summer, woman divers dive for abalone and turban shells. The island is also known for the production of natural salt.

能登丼



輪島キリコ会



MAMINOHANA (Wave Flowers)
波の花

Fantastic winter scene **F-1**

The white foam created by waves resembles flower petals when blown by strong winds. This phenomenon, a symbol of northern Noto, is referred to as wave flowers, a representative landscape of the area. Wave flowers are often seen on cold days from the November through late February, when strong winds create a rough sea.

☎ 0768-32-0408 (Sosogi Tourism Association)



Tarumi Waterfall
垂水の滝

A rare seaside waterfall **F-1**

This very unusual waterfall is in a rocky area on the Sea of Japan. Because water splashes upwards toward the sky in the strong winter wind, it is also referred to as Fukitage (Splash-Up) Waterfall.

☎ 0768-32-0408 (Sosogi Tourism Association)



Salt Station
塩の駅

Traditional salt making **F-1**

Salt is produced from marine water on the seashore by means of a traditional method. You can make your original salt mixed with various ingredients and experience salt making.

☎ 0768-32-1177 (Wajima Seien)



MAGAKI (Bamboo fence)
間垣

Wisdom to protect houses from salty winds **B-2**

In Osawa-machi and the Mizazaki area in the western part of Wajima City, you will find high bamboo hedges around people's homes. These serve to protect the houses from fierce winter winds, as well as from the strong late afternoon sun.

☎ 0768-36-2001 (Nishino Citizens' Hall)



Sodegahama Beach
袖ヶ浜海岸

A 10-minute walk from the morning market **D-2**

With its beautiful sand and clear, shallow water, this beach is a popular bathing spot in summer. You can also camp near the beach.

☎ 0768-23-1146 (Wajima City Tourism Division)

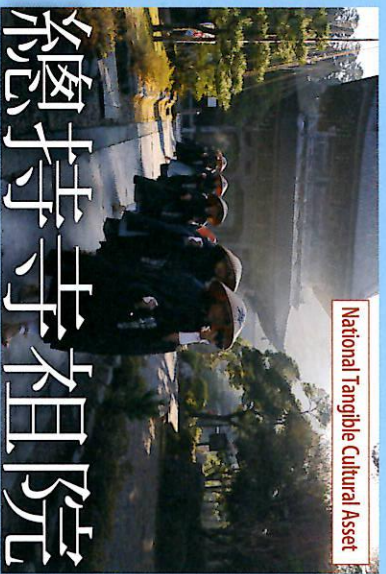


Nishino Rocky Coast
西保海岸

A hidden scenic spot surrounded by cliffs **C-2**

If you drive a few kilometers westward from downtown Wajima, you will see a dynamic view of steep cliffs and rocky stretches.

☎ 0768-35-2001 (Nishino Citizens' Hall)



National Tangible Cultural Asset

總持寺 相院



Bird-watching

Hegura-jima Island



Soujiji Temple

★ Michelin Green Guide Japan

One of the headquarters of the Soto sect of Zen Buddhism along with Eiheiji Temple **C-3**

The Soto sect of Zen Buddhism was introduced to Japan by Priest Dogen. There are two headquarters of the Soto sect: Soujiji Temple and Eiheiji Temple. Soujiji Temple was originally built in Wajima City around 700 years ago. However, in April 1898, the buildings were damaged by a fire and the temple was rebuilt in Yokohama. A few years later, some of the buildings were rebuilt in Wajima City. Monks train in the temple through meditation, and you may see them visiting houses for alms in the early morning as part of their training. You can experience Zen meditation and try Buddhist cuisine in the temple if you make a reservation.

☎ 0768-42-0005

能登平家の郷



Noto Heike Park

Kami-Tokikuni Traditional Building

Building: National Important Cultural Asset
Garden: Nationally Designated Place of Scenic Beauty

Princely house of a village headman that took 28 years to build **E-2**

Mr. Tokikuni was the village headman in feudal times, and his family was allowed to have a family name and bear a sword, which was exceptional for commoners. The large thatched roof, the Chinese-style entrance hall made of zelkova, the dignified shoin-style master's room, and the beautiful garden in the style of the kamakura period will fascinate you.

☎ 0768-32-0171 No closing days
Open: 8:30AM~5:30PM (from October through June) Admission: 550 yen

Tokikuni Traditional Building

Building: National Important Cultural Asset
Garden: Nationally Designated Place of Scenic Beauty

Enshrining Emperor Antoku **F-2**

Emperor Antoku, who passed away tragically at the age of eight, is enshrined here. The thick main pillar of the house and its huge beams give a dynamic impression, and the garden is laid out in such a way as to use the natural geography as it is. Family treasures and old documents are exhibited.

☎ 0768-32-0075 April through December: No closing days January through March: Open only on Saturdays and Sundays and when a reservation is made one week in advance. Open: 8:30AM~5:00PM Admission: 600 yen



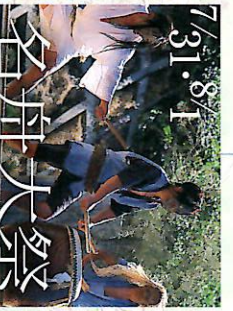
Wajima Kiriko Art Museum

Here you can experience the atmosphere of a kiriko festival at any time of the year.

More than 30 giant kiriko lanterns, which are indispensable for festivals in Noto, are exhibited in the museum. The sound of the bamboo flue and drums creates a festive atmosphere.

☎ 0768-22-7100 No closing day
Open: 8:00AM~5:00PM Admission: 630 yen

Anamizu



Nabune Grand Festival

A portable shrine is carried by boat to the torii gate that stands in the ocean. The highlight of the festival is the powerful drum performance by men wearing scary masks. The origin of the festival dates back over 400 years.

☎ 0768-34-1001 (Najimi Citizens' Hall)

Wajima Grand Festival

The biggest kiriko festival is held for four nights in summer. It is so exciting to see giant kiriko lanterns decorated with lacquer carried around the streets, and the portable shrine carried into the sea. The scene is more impressive at night, as torches accompany the procession.

☎ 0768-22-1503 (Wajima Tourism Association)



8/22-25